

STITCHSKETCH VER 2.0

RELEASE NOTES

[How to use Vector tools](#)

8/7/2013 Keiji Ikuta

Finally, Backstitch is here! StitchSketch now supports Vector Drawing, which includes Backstitch and Fractional Stitch.

It is probably kind of tricky and confusing using the new tool because the way we treat them (or draw them) is different from what we draw pixels right now.

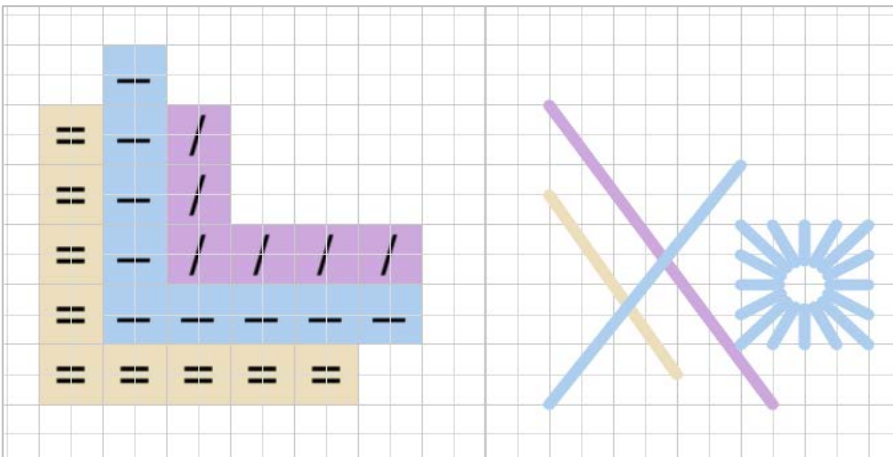
Here I'll try to explain how to use the new tools.

Contents

Vector Drawing	2
Selection Tool.....	8
Eraser	11
Selected Color Bar.....	12
Cell Size	12
Grid Background View	13
Filet Crochet.....	14
File Manager (Gallery) Thumbnail View.....	15
File Menu	15

Vector Drawing

In StitchSketch, Backstitch, Fractional Stitch, and those kind of stitches are called "Vector" drawing (or Vector Shapes). The regular drawing that we used to use before this version (2.0) is called "Pixel" drawing.

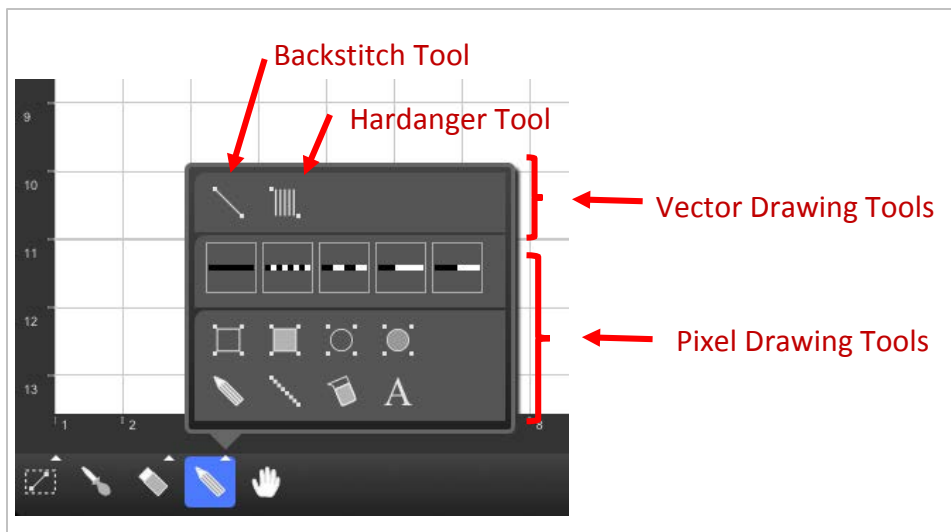


Pixel Drawing

Vector Drawing

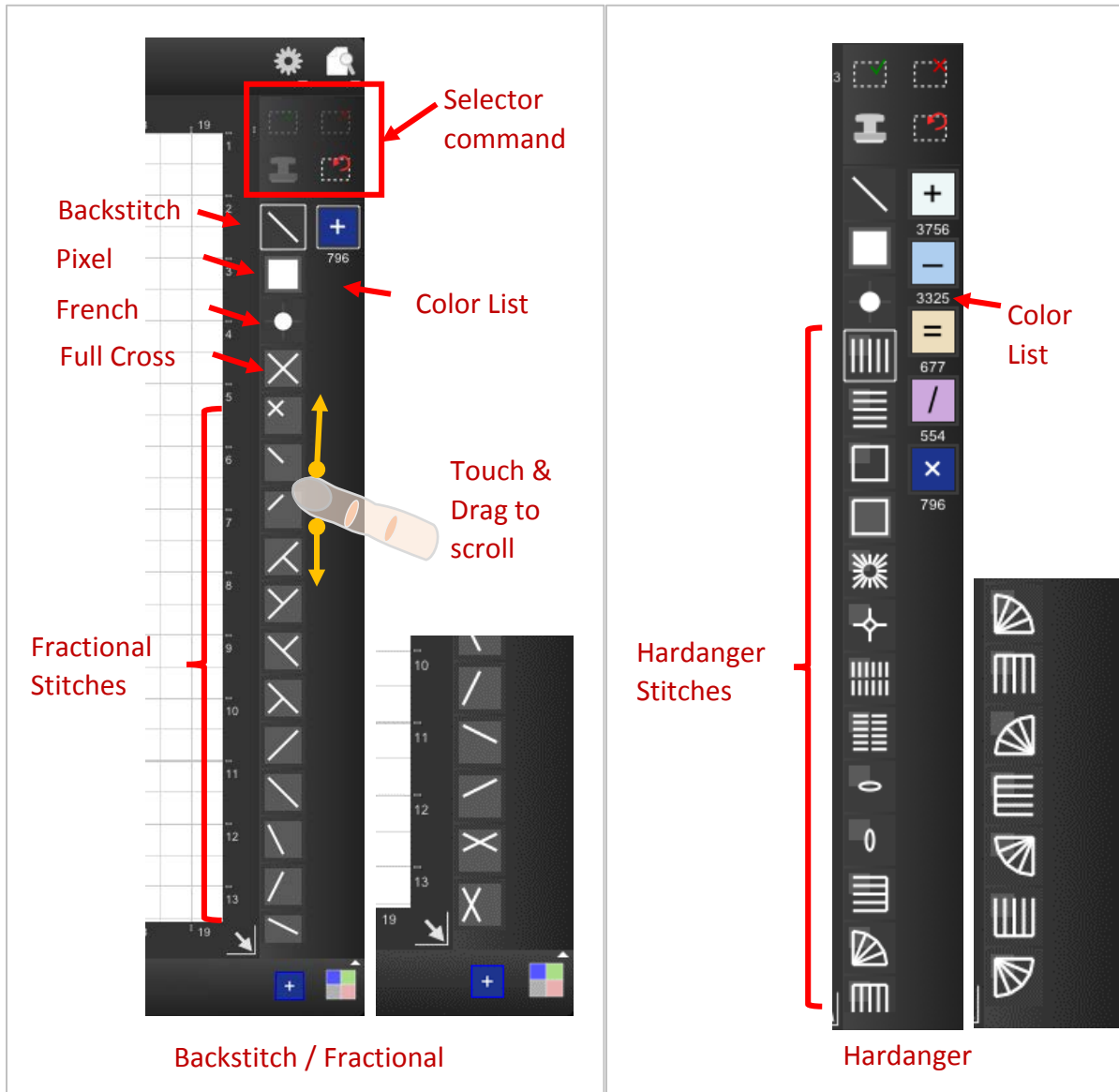
Drawing Tools

In the drawing tool popup menu, you'll now see two new icons: "Backstitch" tool icon and "Hardanger" tool icon.



Vector Shapes Bar

When you select one of those, you will see a toolbar on the right side of the screen, where you can select a shape you want to draw. You can drag the bar to scroll more shapes.



Each shape has different method to draw. See the "cell size indicator" of each shape to see how to draw them.

Cell size indicator

The light gray box behind the shape indicates the cell size.



No box means it's free size. (No stamp)



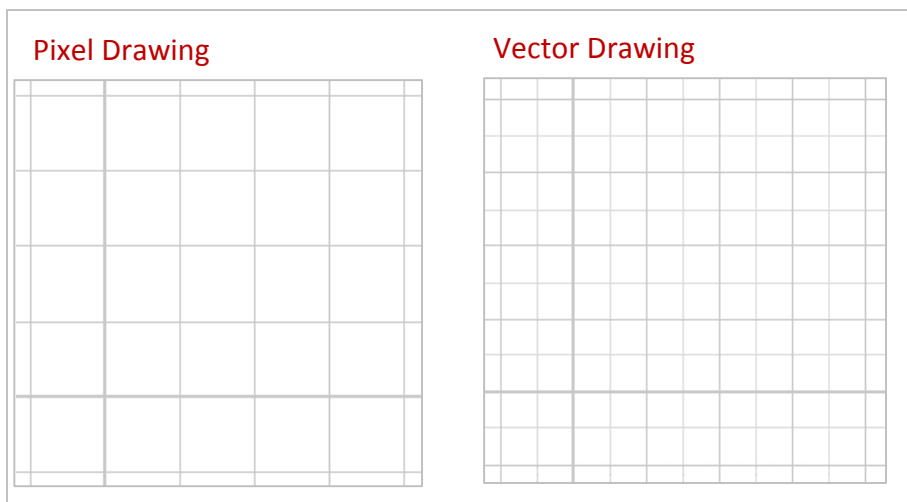
The box indicates it's one-cell size. (Stamp capable)



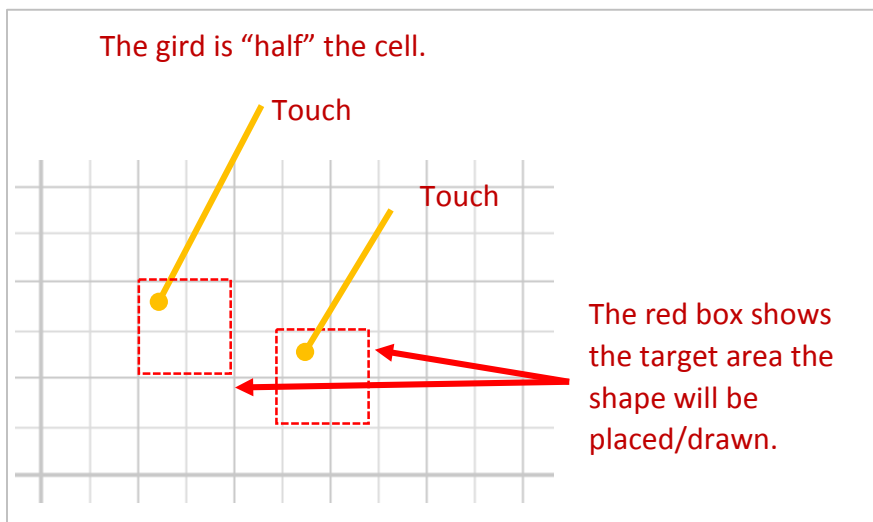
Small box means the shape will be 2x2 the cell size. (Stamp capable)

Grid Granularity

When you select the vector tool, the grid shows additional lines to indicate you can place the shape in half-cell size grid.



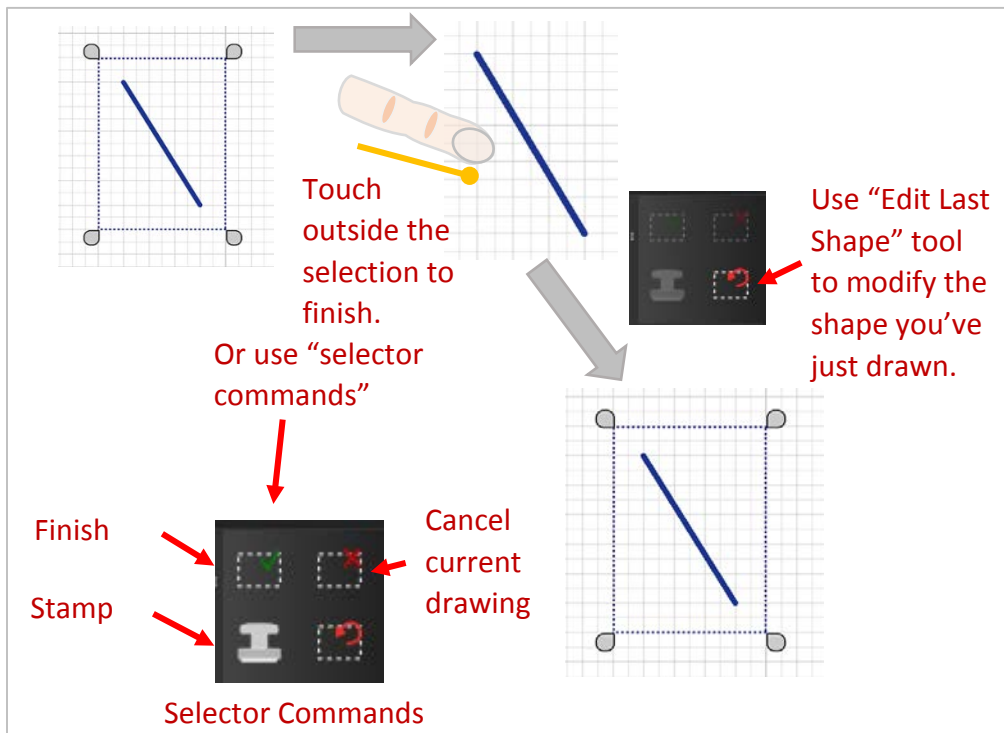
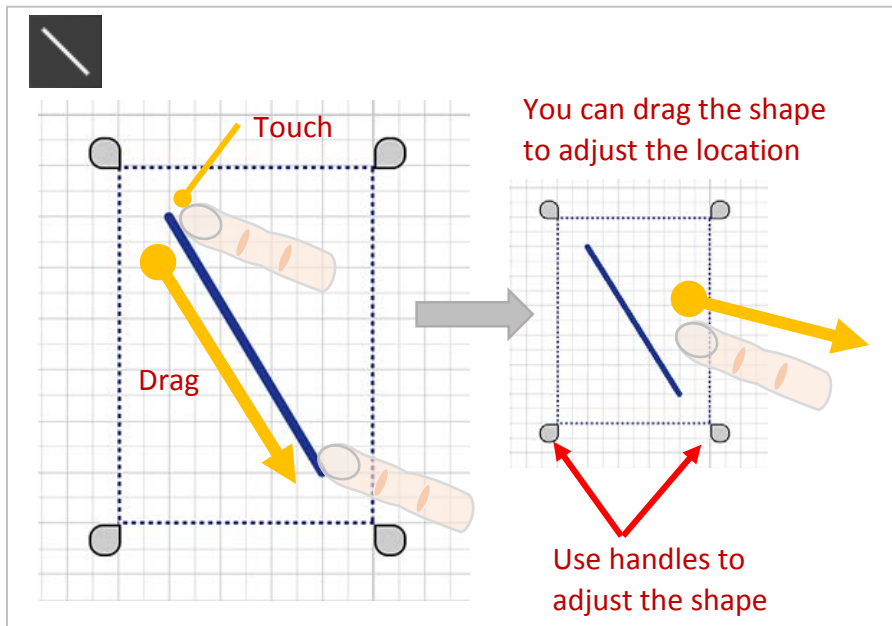
In Vector drawing mode, because the grid is now half the original cell size, you need to be careful where you touch when drawing. Make sure to touch the top left corner of the cell you are aiming to.



Backstitch Tool

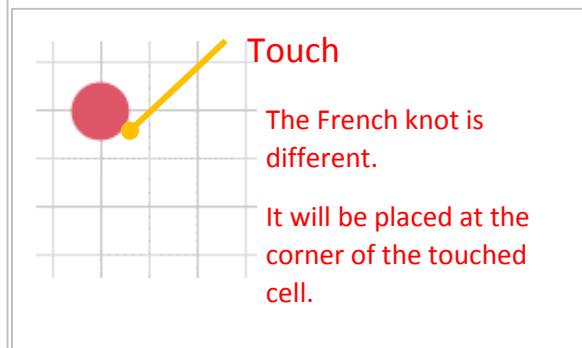
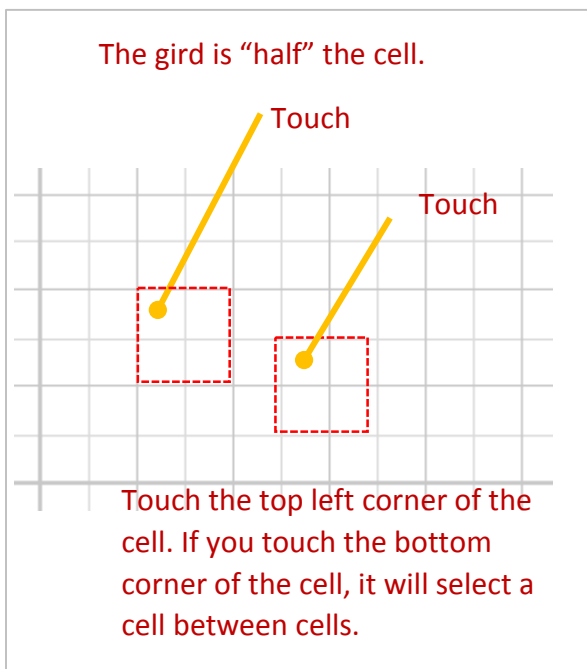
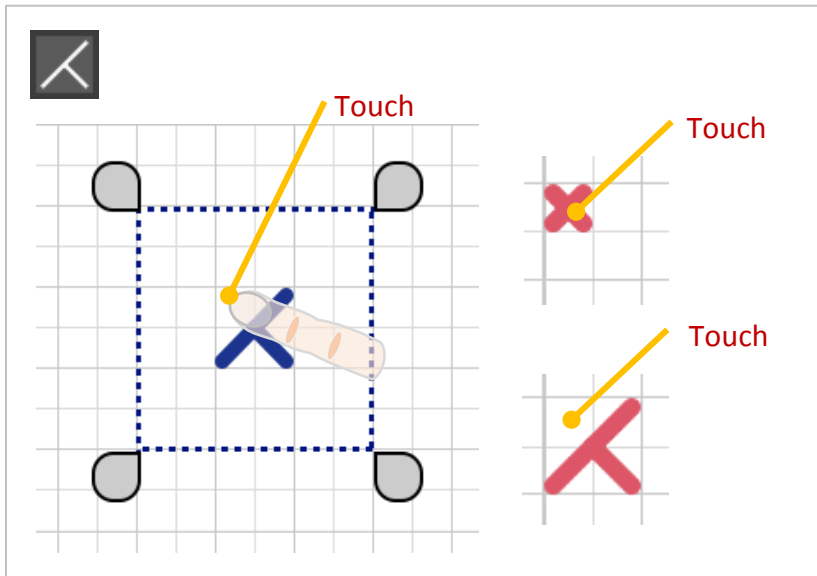
Drawing Backstitch is straightforward. Just touch and drag.

Once drawn, you can use “handles” to adjust the shape. You can also drag the “selection” frame to adjust the location. Also, the new tool called “Selector Commands” are there to help finishing the drawing. You can cancel the drawing (it will disappear), or just finish the shape, or “Stamp” it, meaning it paste the shape and keep the “selection” status – you can keep stamping the shape as you move the selection.



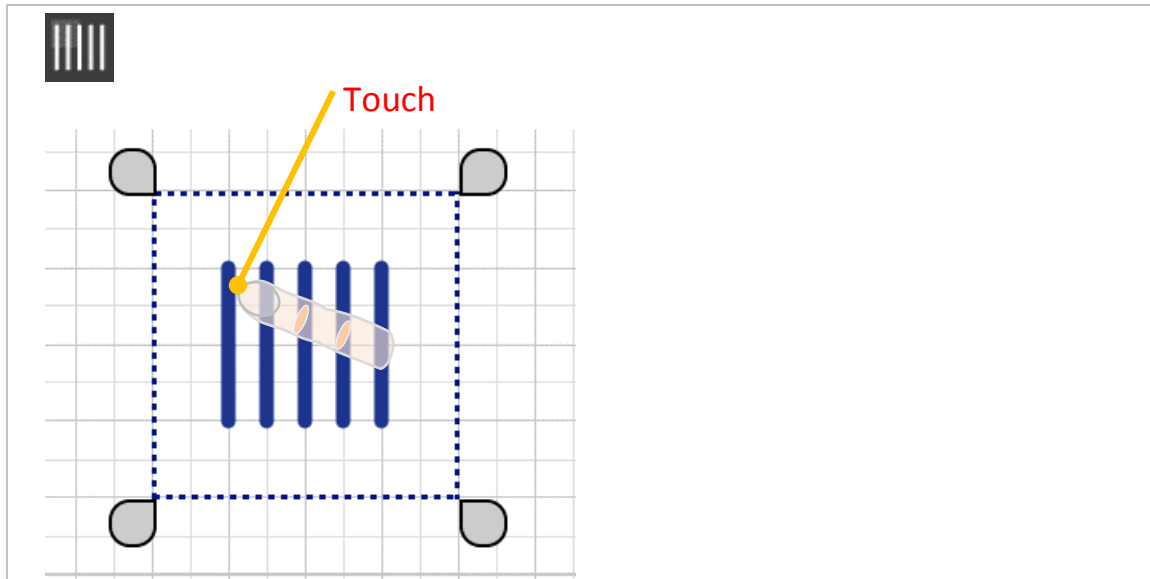
Fractional Stitch

Drawing Fractional stitch is easy. Just touch (tap) and the shape will be there. The point you touch is important to place the shape exactly you want.



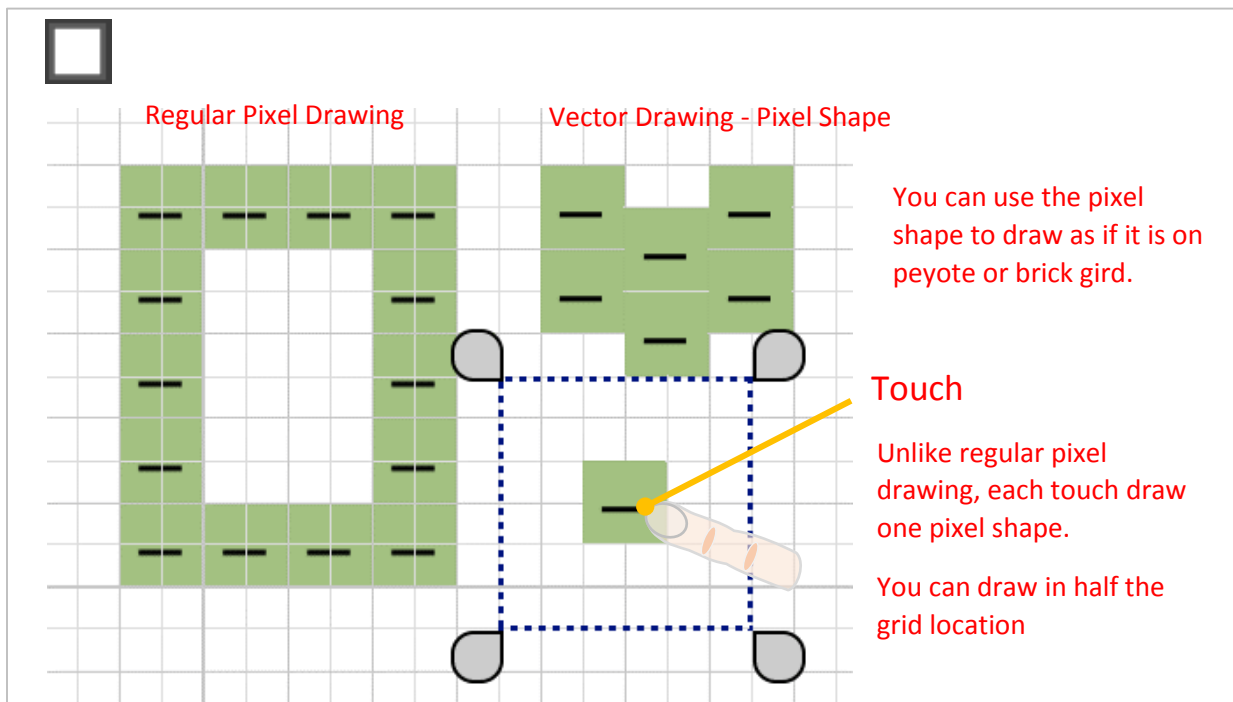
Hardanger Tool

Drawing Hardanger is same as drawing Fractional Stitch. It's just twice the size of fractional stitches.



Pixel Shape

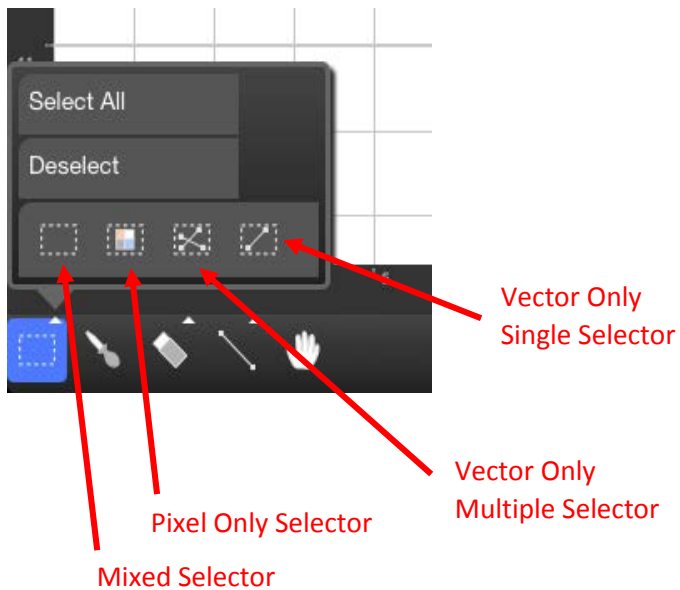
To place a “pixel” as a vector shape, you can use the “Pixel” shape. It shows color and a symbol associated with the color – showing exactly same as pixel drawing. As it is actually a vector shape, you can use, or rather you need to use, same tool you use for vector drawing.



Selection Tool

Selectors

The selection tool is now expanded to deal with the vector drawing.



There are four icons: From the left, they are "Mixed Mode", "Pixel Only Mode", "Vector Selector", "Single Shape Selector"



The "Pixel Selector" pretty much works same as before. It selects only "Pixels".



The "Mixed Selector" works quite similar to the "Pixel Selector", but you select both pixels and vectors, as long as they are inside the selection box.



The "Vector Only Multiple Selector" selects only the vector shapes. Touch the shape, and it is selected. Touch the same shape, it is unselected. Touch another shape, it is selected adding to the existing selection. So, keep touching the vector shapes, and you can use image processing tools.

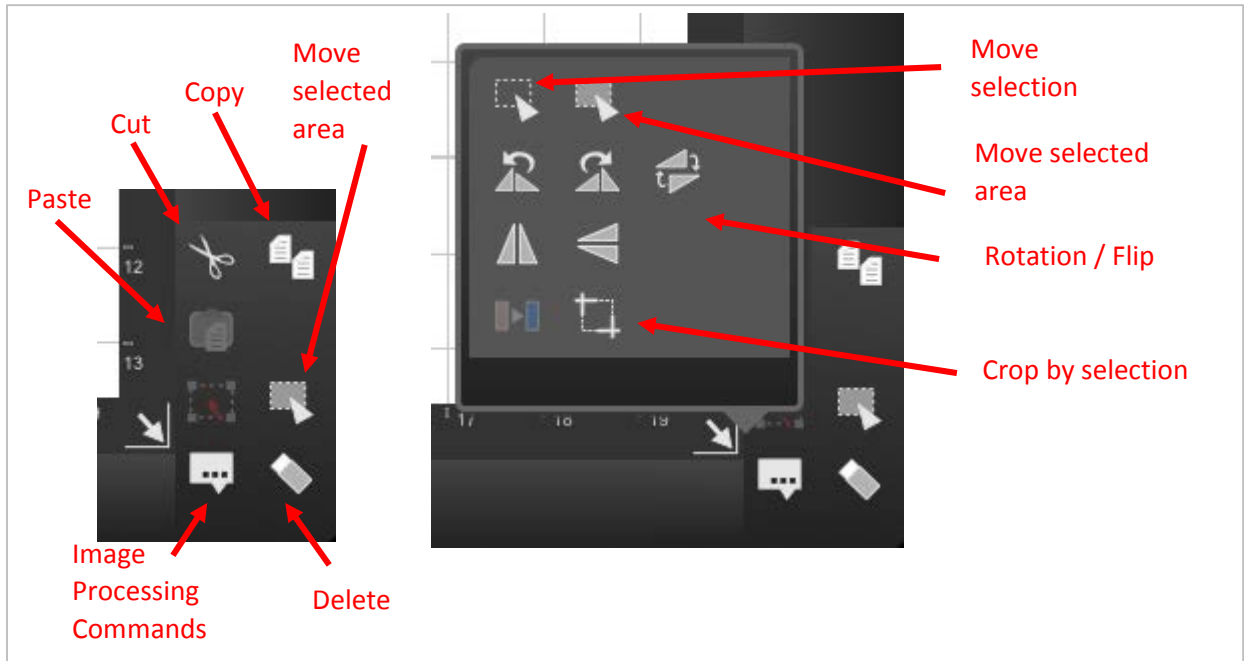


The "Vector Only Single Selector" works similar to the "Vector Only Multiple Selector", but it select only one shape. If you select one shape and touch another shape, then the existing selected shape is unselected and the newly touched one will be selected.

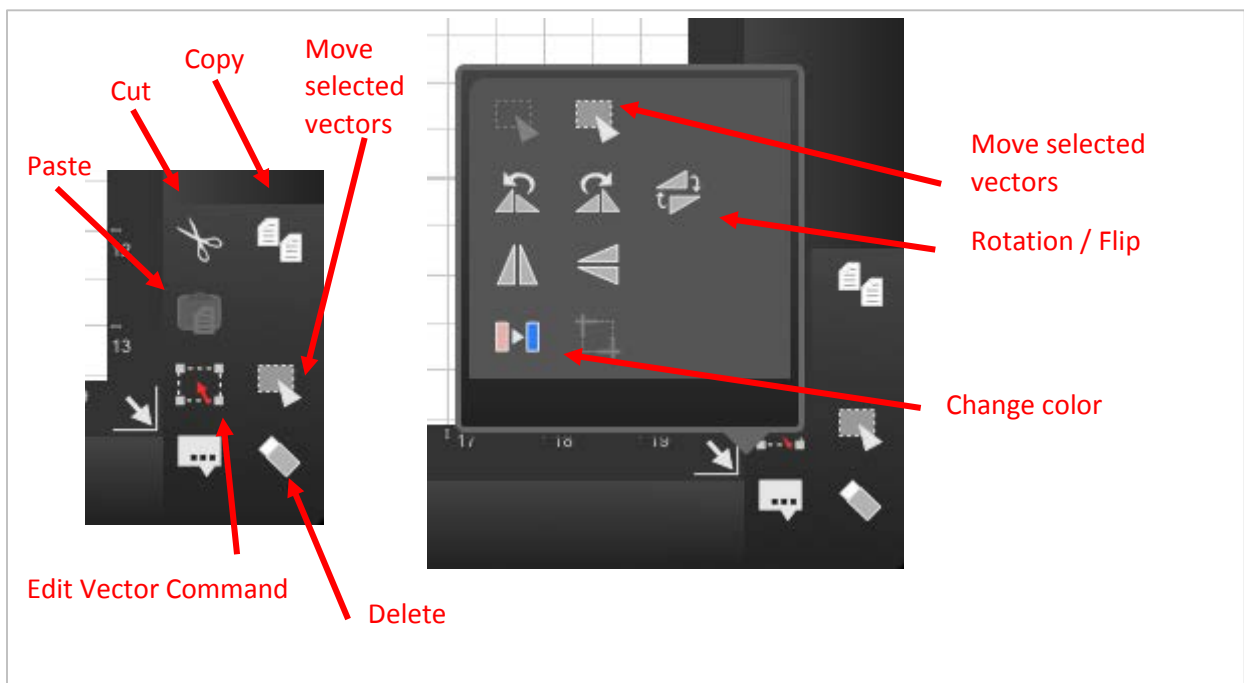
Image Processing Tools

Once you select the drawing, you can use the image processing tools.

Pixel Only Mode / Mixed Mode



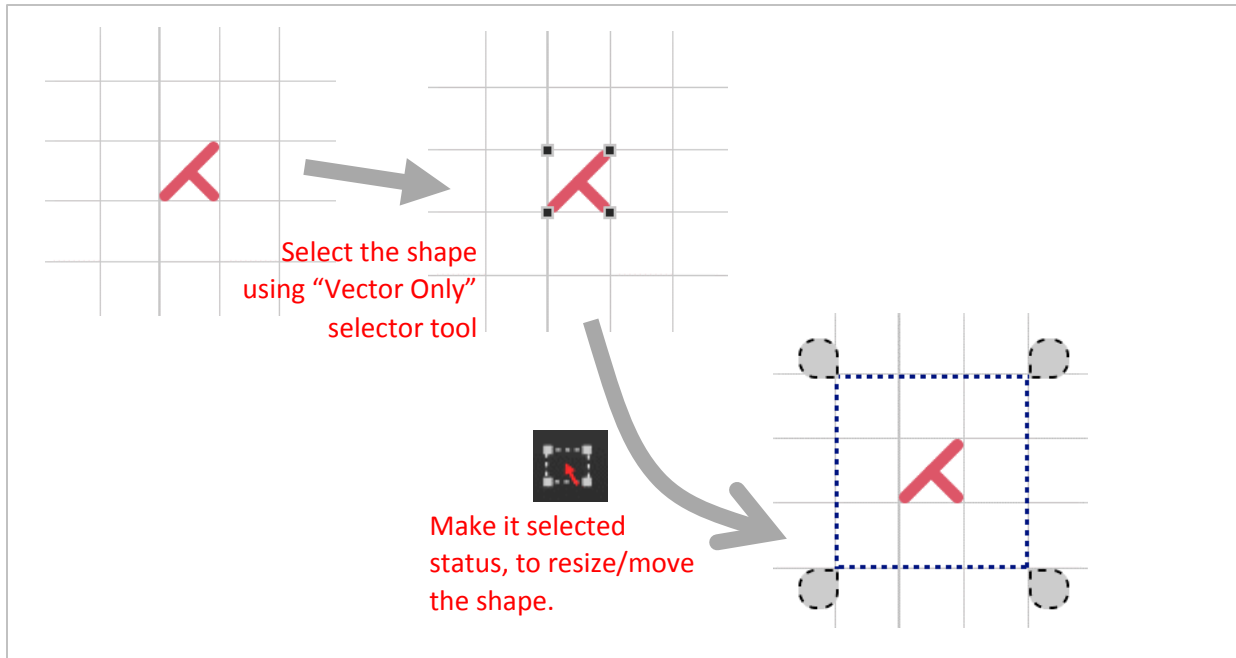
Vector Only Mode



"Crop" works only if you use "Mixed Selector" or "Pixel Selector"

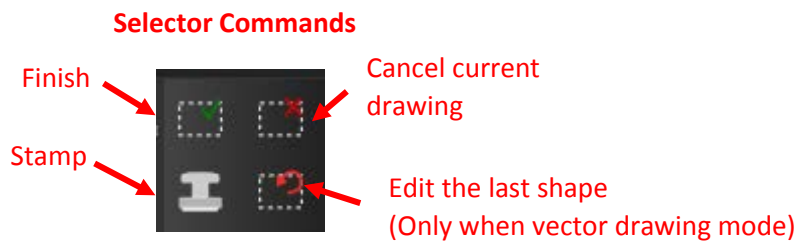
Edit Vector Command

You can use this tool to edit the vector shapes.

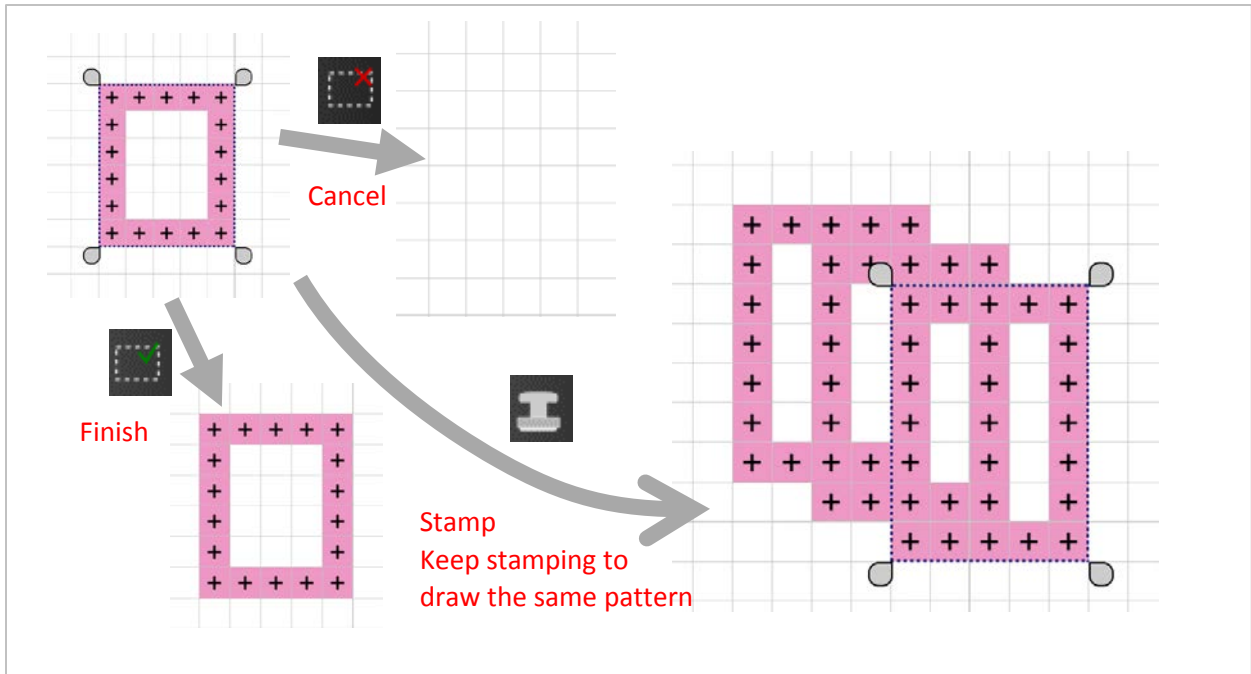


Selection Command Icons

The Selection Command Icons (On top of the right side toolbar) can be used for any "selection" type of operation, such as pixel drawing (pixel line, pixel rectangle, pixel ellipse), selection tool.



From the top left to right, they are "Finish Selection", "Cancel Selection", and "Stamp".



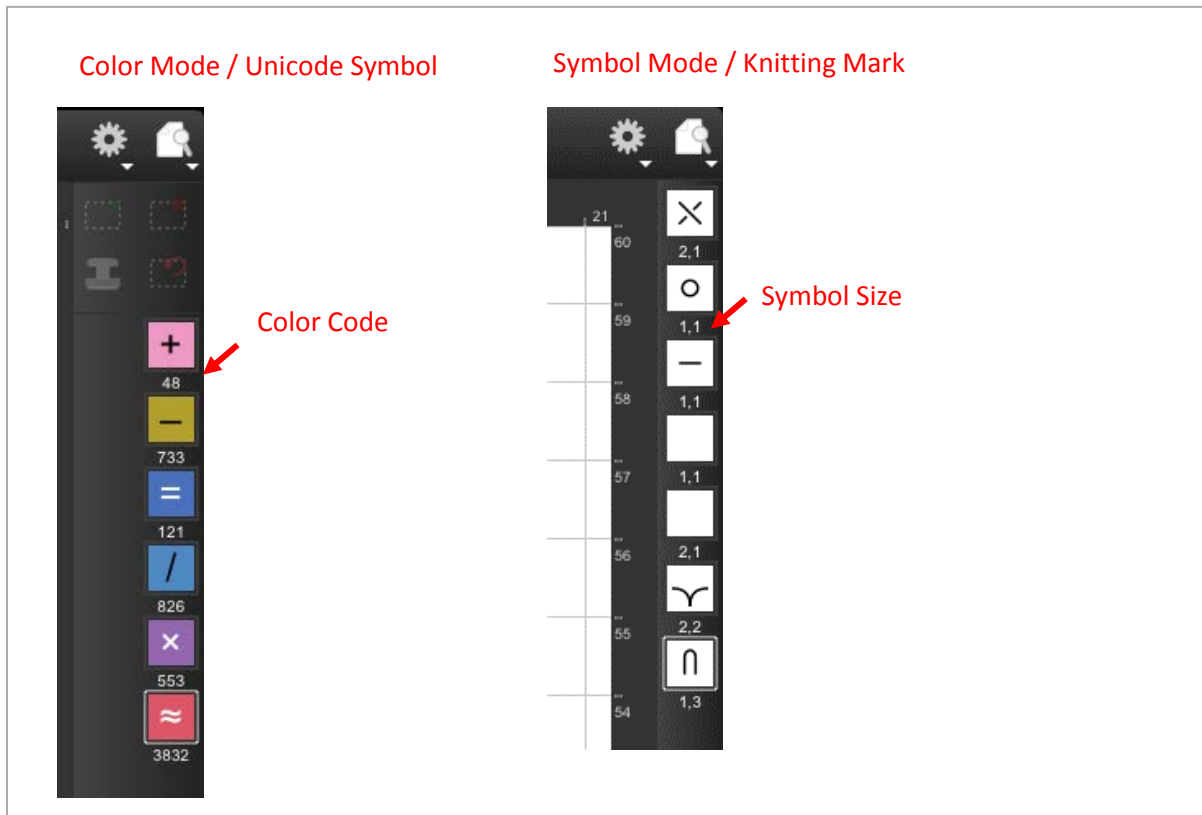
Eraser

Eraser erases a single cell. If the top left corner of the vector shape is inside the cell, it will be deleted.

To delete a Backstitch, or to delete multiple vector drawing, use the selector tool and erase command.

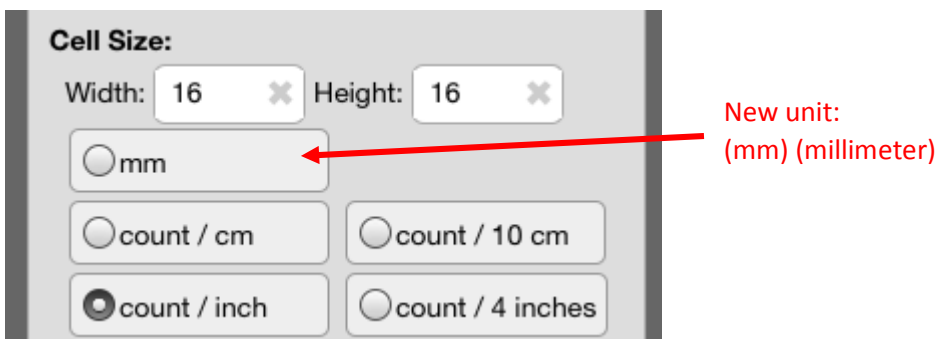
Selected Color Bar

Selected Color List (Dialog Box/Bar) now shows "Color Code" (Unicode Symbol) or "Size" (Knitting Mark)



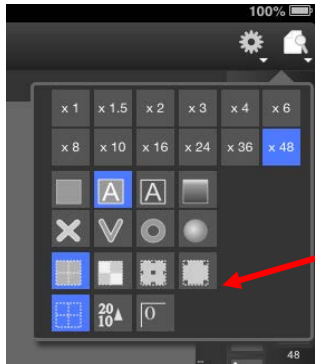
Cell Size

In the chart information screen (when creating a new one or changing the information), you can now specify the cell size in its actual size instead of count per unit size.



Grid Background View

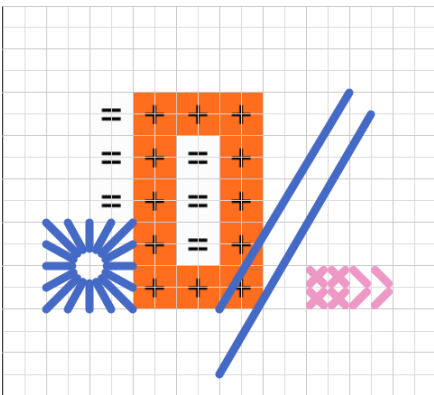
You can choose how the grid background is displayed: Painted, Transparent, Linen, Aida



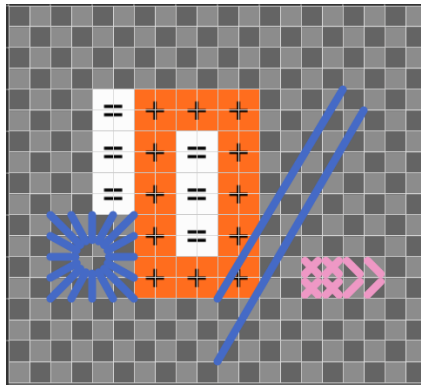
Grid Background View Options



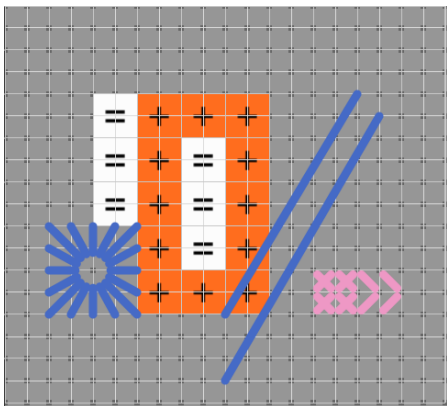
Regular Paint View



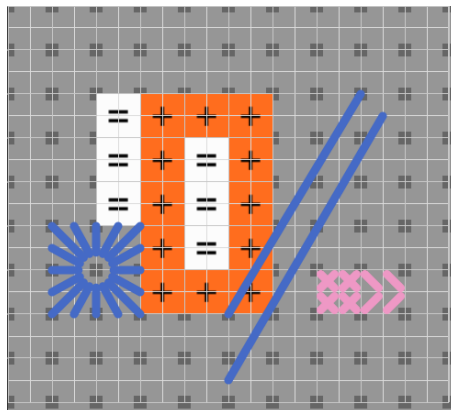
Transparent View



Linen Cloth View

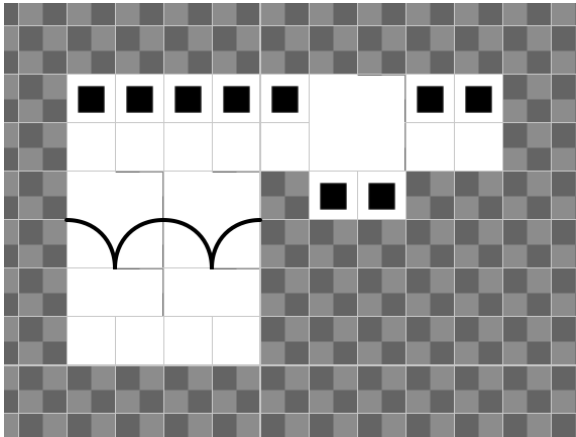


Aida Cloth View



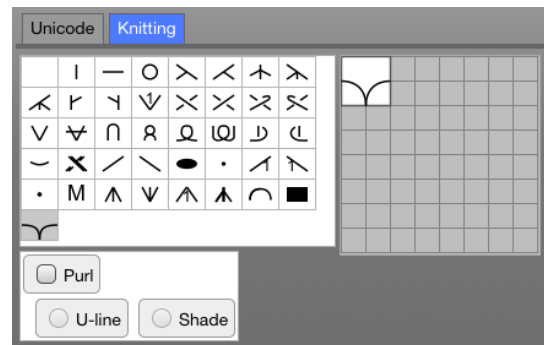
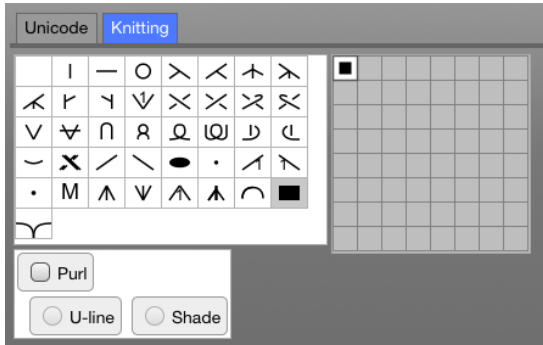
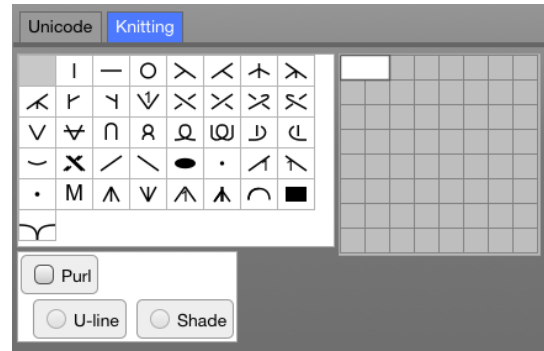
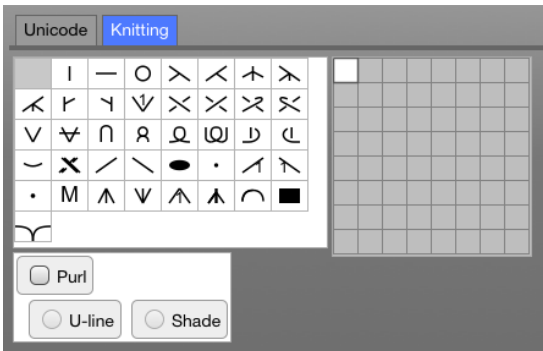
Filet Crochet

You can use StitchSketch to design Filet Crochet in Design mode view.



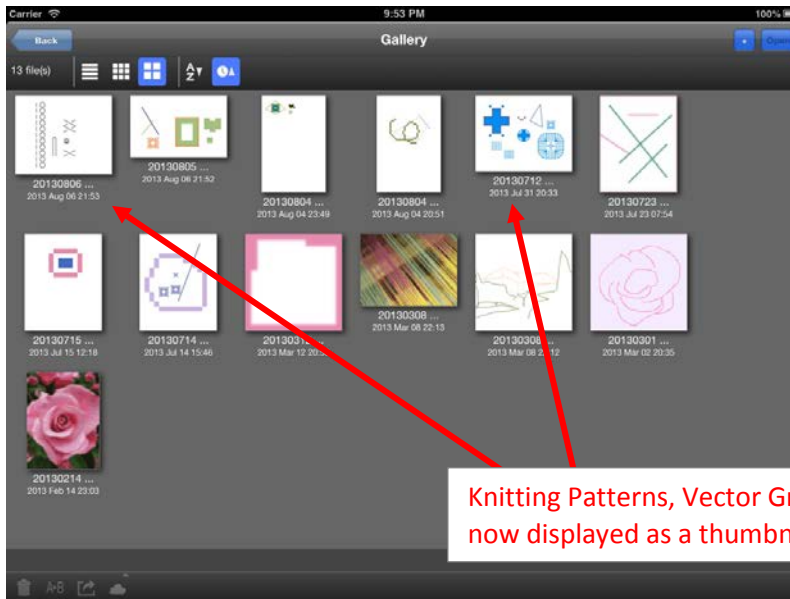
To work with a Filet Crochet pattern, you can setup following options:

1. Use a char type: "Knitting Pattern"
2. Use the Grid View option "Transparent"
3. I recommend to use following symbols
 - a. Blank – 1x1 size for Mesh
 - b. Blank – 2x1 size for Long Mesh
 - c. Black square symbol for Solid Mesh
 - d. Lacet symbol for Lacet



File Manager (Gallery) Thumbnail View

Thumbnail image now support symbols w/white, vectors



File Menu

Texts are removed from the menu, due to the layout restriction on iPhone devices.

